



20 Alumhurst Road

Westbourne, Bournemouth, BH4 8ER

£850 Per Month



Road Map



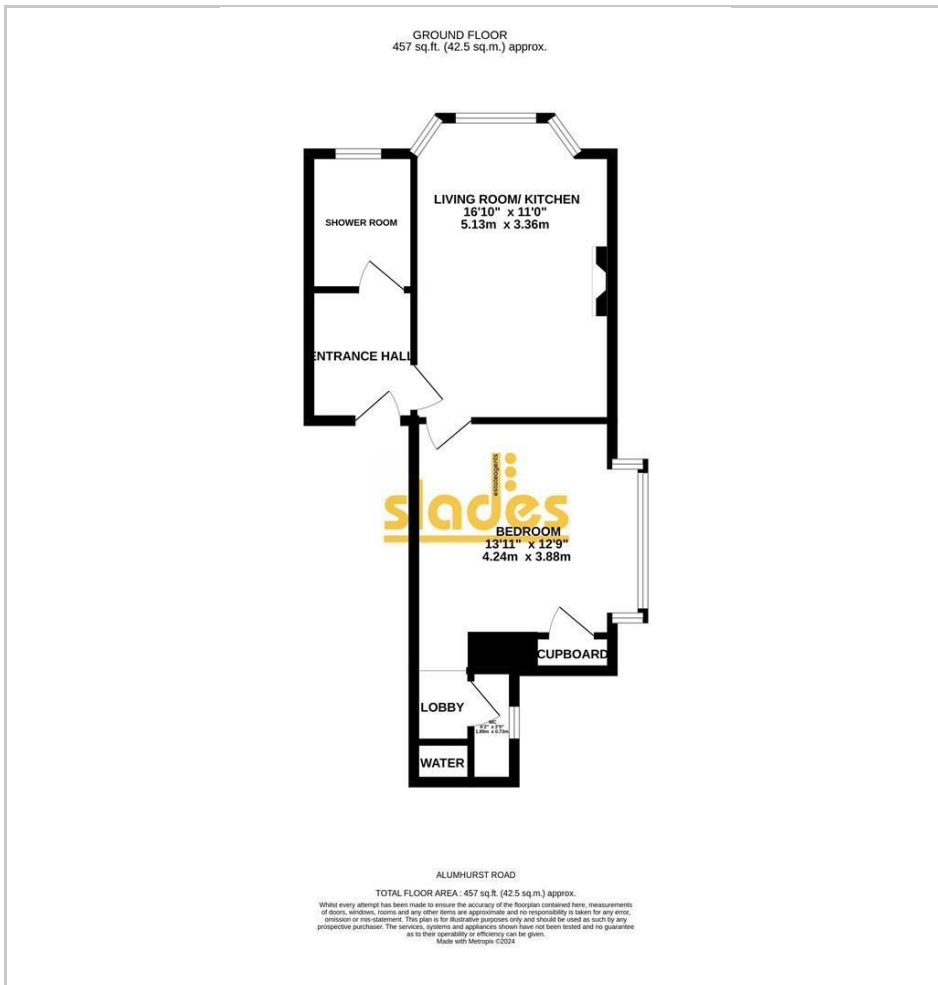
Hybrid Map



Terrain Map



Floor Plan



- Short Stroll to Westbourne Village
- First Floor Converted Apartment
- Unfurnished
- Council Tax Band A
- EPC Rating C
- Available early September 2026

Viewing

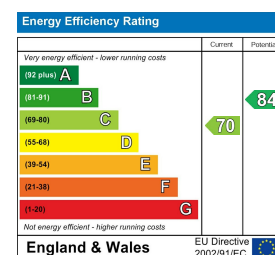
Please contact our Slades Estate Agents Office on 01202548855 if you wish to arrange a viewing appointment for this property or require further information.



These particulars, whilst believed to be accurate are set out as a general outline only for guidance and do not constitute any part of an offer or contract. Intending purchasers should not rely on them as statements of representation of fact, but must satisfy themselves by inspection or otherwise as to their accuracy. No person in this firm's employment has the authority to make or give any representation or warranty in respect of the property.

301 Wimborne Road, Bournemouth, BH9 2AA
Tel: 01202548855 Email: info@sladesproperty.co.uk <https://www.sladesproperty.co.uk>

Energy Efficiency Graph



**** AVAILABLE EARLY SEPTEMBER 2026 ** A well presented 1 DOUBLE BEDROOM first floor flat within a short stroll of Westbourne Village.**



